

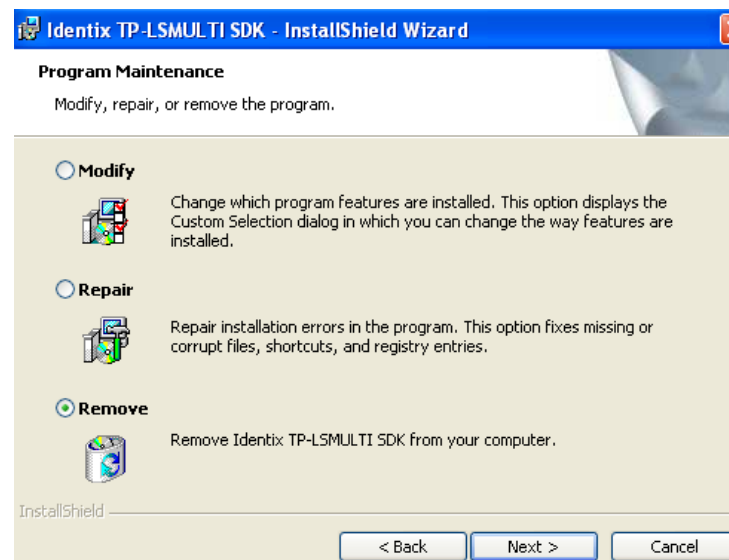


LexisNexis Electronic Fingerprint Service

The old driver must be removed before the new driver is installed.

***Administrator access to the computer is required when removing and installing the driver**

1. Unplug the fingerprint scanner from the computer.
2. Go to Start | Control Panel | Add Remove Programs.
3. Locate Identix TP-LSMULTI SDK, select Change, click Next, then select Remove.





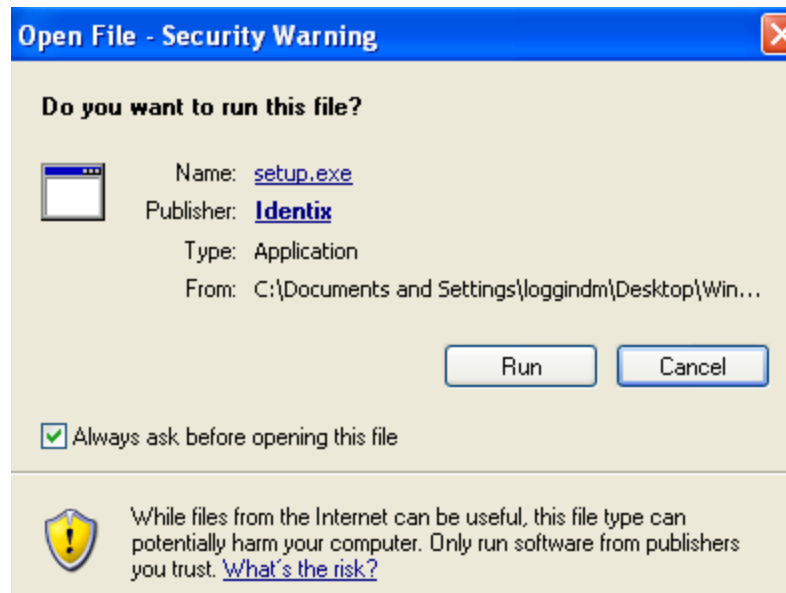
Driver Installation Instructions for Windows XP / 7 32 bit - L1 Identix Fingerprint Scanner Driver

4. Download the L1 Identix driver upgrade from <http://lexisnexis.com/identix>.
5. After unzipping the file, double click "TP-LSMULTI-SDK32_7.11" folder, then double click Setup.exe.

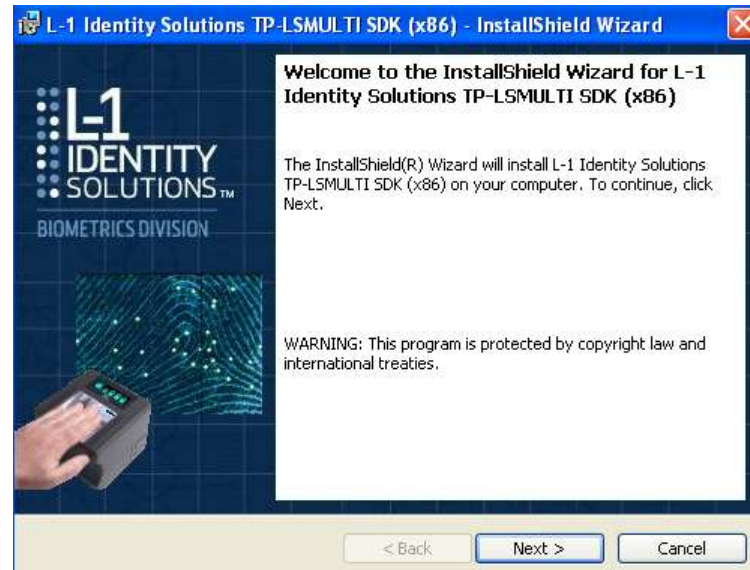


setup
Setup Launcher
L-1 Identity Solutions - Biomet...

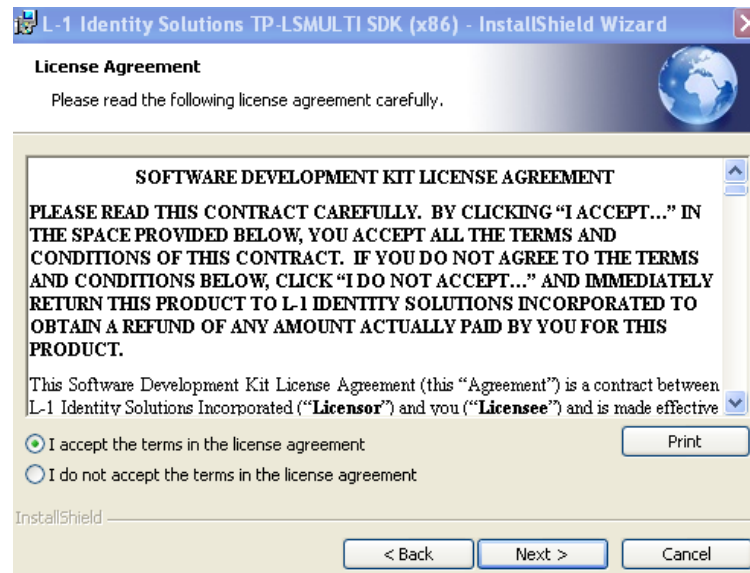
6. Select Run.



7. Click Next.



8. Select I Accept, then click Next.



9. Enter User Name and Organization, then click Next.

L-1 Identity Solutions TP-LSMULTI SDK (x86) - InstallShield Wizard

Customer Information

Please enter your information.

User Name:
Doe Doe

Organization:
LexisNexis RIAG

< Back Next > Cancel

10. Click Next.

L-1 Identity Solutions TP-LSMULTI SDK (x86) - InstallShield Wizard

Destination Folder

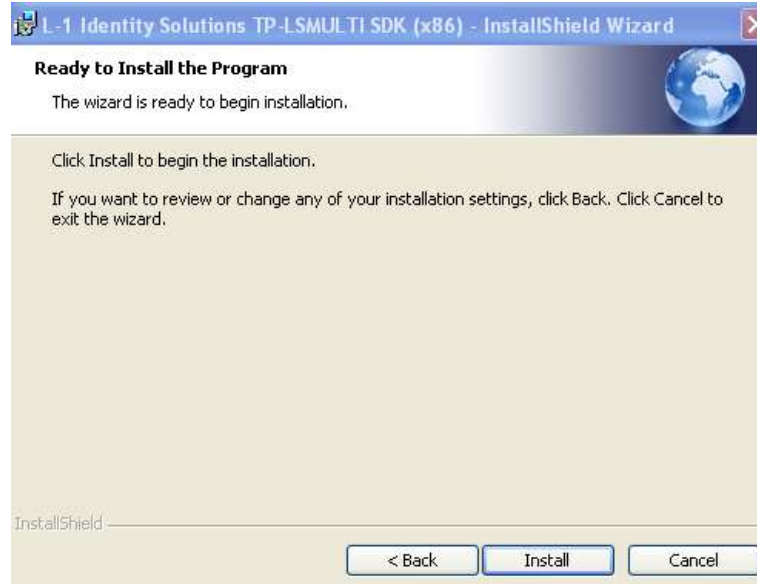
Click Next to install to this folder, or click Change to install to a different folder.

Install L-1 Identity Solutions TP-LSMULTI SDK (x86) to:
C:\Program Files\L1ID\TP-LSMULTI SDK\

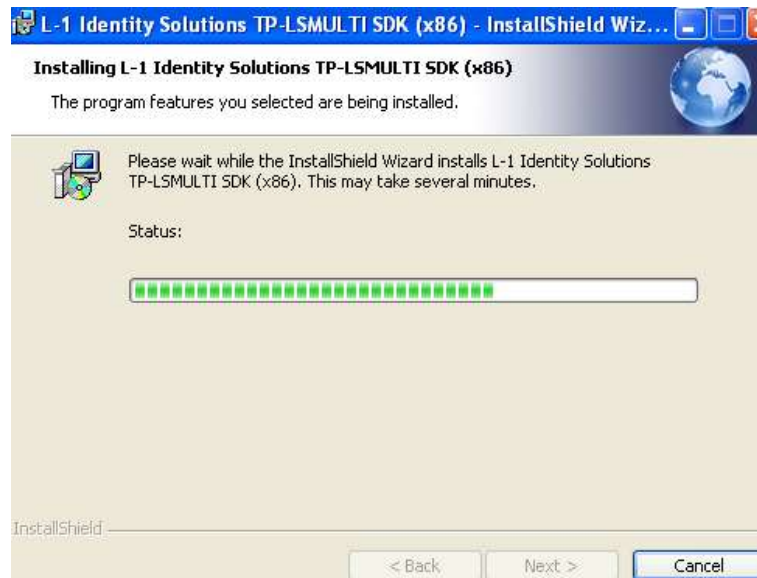
Change...

< Back Next > Cancel

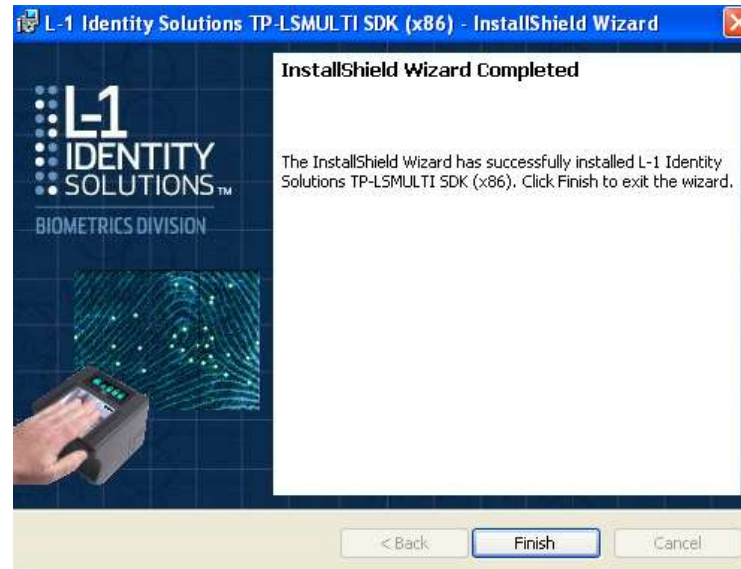
11. Click Install.



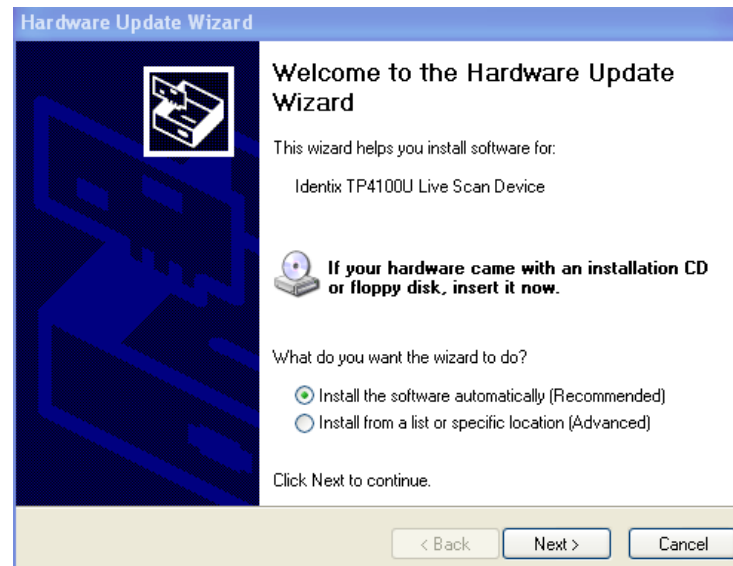
12. Installation begins...



13. Click Finish.

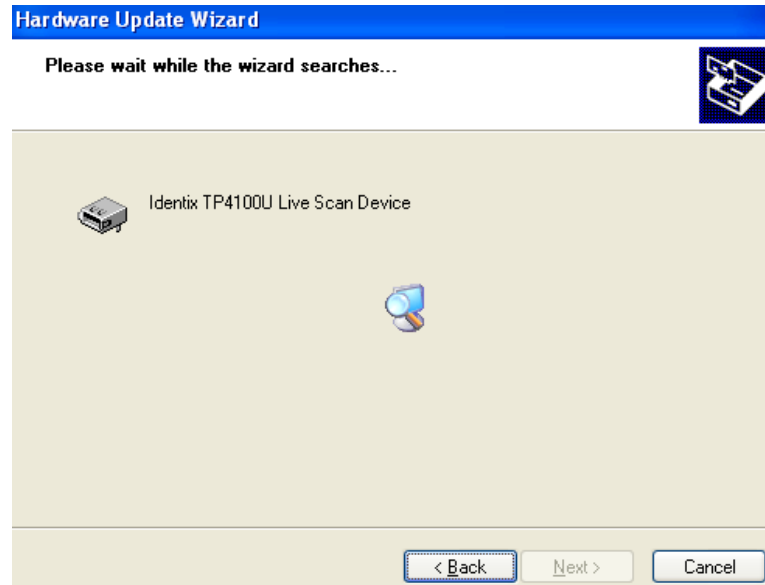


14. Plug the scanner into the computer. If the Hardware Update Wizard appears, select the "Recommended" option, then click Next.





15. The Hardware Wizard will finish installing the driver. When the driver installation is complete click Finish.



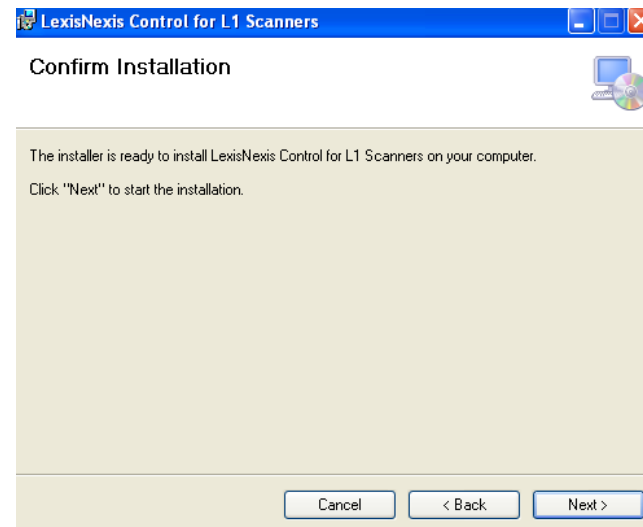
16. Download “ActiveX Control for the Upgraded L1 Identix Scanner” from <http://lexisnexis.com/identix>.

The new L1 Identix scanner driver has to be installed before this is installed. Administrator access to the computer is required.

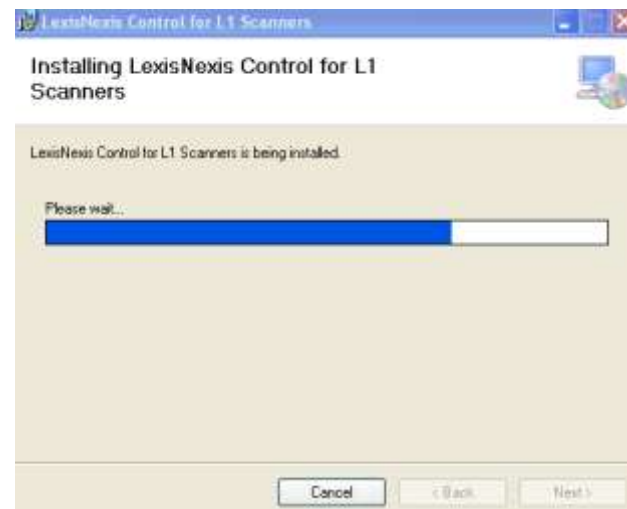
17. After unzipping the file double click Setup, then click Next.



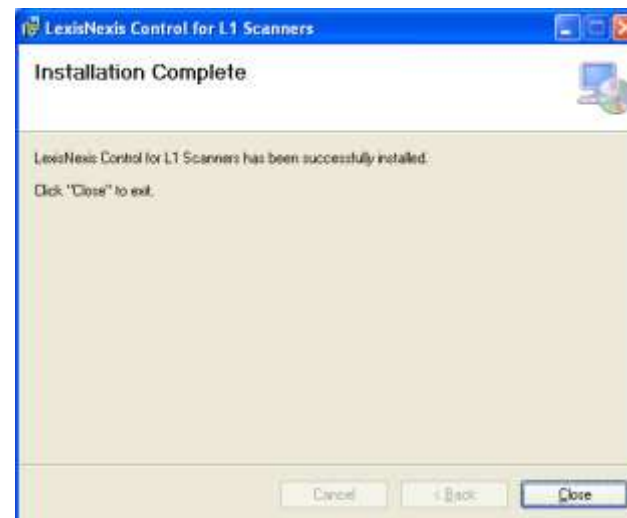
18. Click Next.



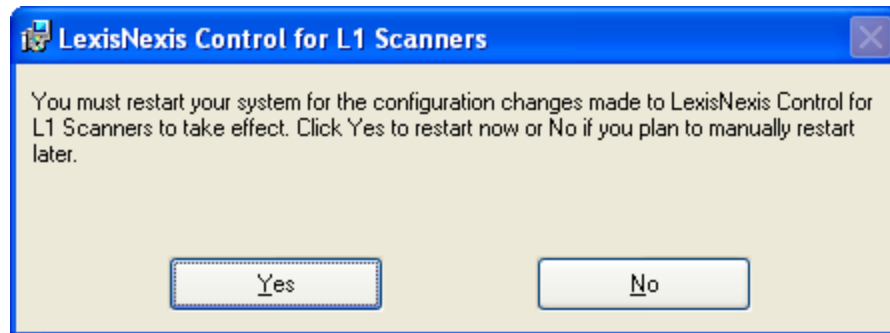
19. Installation begins.



20. Click Close.



21. Select Yes to restart the computer.



ActiveX Control Settings

Before logging into LexisNexis Electronic Fingerprint Service check the following: Open Internet Explorer, click on Tools, then Internet Options. Select the Security tab, then Custom Level... button at the bottom.

“ActiveX controls and plug-ins” should have the these settings:

- ✓ Automatic prompting for ActiveX controls – **Enable**
- ✓ Binary and script behaviors - **Enable**
- ✓ Download signed ActiveX controls – **Prompt**

- ✓ Download unsigned ActiveX controls – **Disable**
- ✓ Initialize and script ActiveX controls not marked as safe – **Prompt**
- ✓ Run ActiveX controls and plug-ins – **Enable**

- ✓ Script ActiveX controls marked for safe scripting – **Enable**

